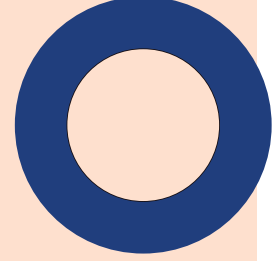


BARLOC Rubber Covered Lock Washers



PART NO.	TO SUIT BOLT DIA.		A		B		C	
	INCH	mm	INCH	mm	INCH	mm	INCH	mm
MB1321-001	6 B.A. (.110) & No.4 U.N.C. (.112)	2.5/2.6	.300	7.62	.120	3.05	.050	1.27
MB1321-002	4 B.A. (.140) & No.6 U.N.C. (.138)	3	.340	8.64	.150	3.81	.050	1.27
MB1321-003	3 B.A. (.161) & No.8 U.N.C. (.164)	3.5/4	.400	10.16	.170	4.32	.055	1.40
MB1321-004	2 B.A. (.185) 3/16"	4	.440	11.18	.195	4.95	.060	1.52
MB1321-005	1/4"	6	.525	13.34	.260	6.60	.070	1.78
MB1321-006	5/16"	8	.640	16.26	.325	8.26	.070	1.78
MB1321-007	3/8"	9	.730	18.54	.385	9.78	.080	2.03
MB1321-008	7/16"	10	.825	20.56	.448	11.38	.090	2.29
MB1321-009	1/2"	12	.920	23.37	.515	13.08	.090	2.29
MB1321-010	9/16"	14	1.010	25.65	.580	14.73	.090	2.29
MB1321-011	5/8"	16	1.110	28.19	.640	16.26	.100	2.54
MB1321-012	3/4"	18	1.295	32.90	.765	19.43	.105	2.67
MB1321-013	7/8"	22	1.440	36.58	.900	22.86	.110	2.79
MB1321-014	1"	24	1.675	42.55	1.020	26.29	.120	3.05

A dual purpose, vibration resistive lock washer, which protects as it locks. Ideal for surfaces coated with paint, plating, enamel, etc. Suitable for use with water, mineral base oils and alkalis, over a temperature range of -10°C to +80°C. Extensively used in the automotive and domestic appliance industries.

PART NO.	THREAD DIA.		A		B		C	
	INCH	mm	INCH	mm	INCH	mm	±.005 INCH	±.0.13 mm
MB1127-700	2 B.A. (.185) 3/16" No.10 U.N. (.190)	5	.385	9.78	.220	5.59	.050	1.27
MB1127-701	1/4"	6	.517	13.13	.292	7.42	.060	1.53
MB1127-702	5/16"	8	.557	14.15	.357	9.07	.060	1.53
MB1127-703	3/8 & 1/8 B.S.P. (.383)	10	.622	15.80	.427	10.85	.060	1.53
MB1127-704	7/16"	11/12	.747	18.98	.482	12.24	.060	1.53
MB1127-705	1/2 & 1/4 B.S.P. (.518)	-	.807	20.50	.567	14.40	.060	1.53
MB1127-706	5/8"	16	.997	25.33	.677	17.20	.060	1.53
MB1127-707	3/8 B.S.P. (.656)	-	.934	23.72	.707	17.96	.060	1.53
MB1127-708	3/4"	18	1.055	26.80	.805	20.45	.080	2.03
MB1127-709	13/16 & 1/2 B.S.P. (.825)	20	1.120	28.45	.885	22.48	.080	2.03
MB1127-710	7/8 & 5/8 B.S.P. (.902)	22/24	1.245	31.63	.960	24.38	.080	2.03
MB1127-711	1 & 3/4 B.S.P. (1.041)	27	1.370	34.80	1.120	28.45	.080	2.03
MB1127-712	1 3/16 & 7/8 B.S.P. (1.189)	30	1.495	37.98	1.255	31.88	.080	2.03
MB1127-713	1 5/16 & 1 B.S.P. (1.309)	33	1.680	42.67	1.380	35.05	.080	2.03
MB1127-716	1 5/8 & 1 1/4 B.S.P. (1.650)	42	2.057	52.25	1.680	42.67	.080	2.03

A nylon captive sealing washer for screwed assemblies, suitable for applications of 200 lbf/in² working pressure.

- Easily pre-assembled and stored with components
- Much lighter than traditional copper washers
- Excellent mechanical properties
- Extremely durable
- Resistant to oils and fuels
- Not prone to electrolytic corrosion

Widely used in the motor industry and particularly suitable for use on sumps, gearboxes, axles and drain plugs. Not recommended for use in temperatures over 100°C.



BS EN ISO 9002:1994 (STOCKIST)
CERTIFICATE NUMBER RS 00530

MBSL21/05/07

Visit us on the web at
www.barnwell.co.uk



Headquarters and Central Warehouse
M Barnwell Services Ltd,
Reginald Road, Smethwick
West Midlands B67 5AS
Tel 0121 429 8011
Fax 0121 434 3016
e-mail sales@barnwell.co.uk

Dartford
Unit 7 Schooner Park,
Crossways Business Park,
Dartford, Kent DA2 6QG
Tel 01322 293024
Fax 01322 272099
e-mail dartford@barnwell.co.uk

Bellshill
Unit 14 & 16, Murray Place,
Righead Industrial Estate,
Bellshill, Lanarkshire ML4 3LJ
Tel 01698 749666
Fax 01698 749888
e-mail scotland@barnwell.co.uk

Manchester
Unit 36/37, Westbrook Trading Estate,
Westbrook Road, Trafford Park,
Manchester M17 1AY
Tel 0161 888 2330
Fax 0161 888 2296
e-mail manchester@barnwell.co.uk

Bristol
Unit 13, Avonbank Industrial Centre,
West Town Road, Avonmouth,
Bristol BS11 9DE
Tel 0117 982 5245
Fax 0117 923 5623
e-mail bristol@barnwell.co.uk

Export
Tel 0121 429 8011
Fax 0121 420 3080
e-mail export@barnwell.co.uk

Barnwell supplies many other types of sealing kits. Please ask for our brochure 'Sourced, Sealed and Delivered', speak to our staff at any of our 5 locations nationwide, or visit our website at www.barnwell.co.uk

A comprehensive range of quality Sealing Washer Kits , imperial and metric, in a variety of materials is available.

Bonded Washers

MBK-45 Imperial
(range included: from 1/8" BSP to 1" BSP)
MBMK-45 Metric
(range included: from 8 mm to 24 mm)

Self-Centralising Bonded Washers

MBSCK-45 Imperial
MBSCMK-45 Metric

Copper Washers

MBCWK-1 Imperial
(range included: from 1/8" BSP to 1" BSP)
MBCWK-2 Metric
(range included: from M8 to M22)

Fibre Washers

MBFWK-1 Imperial
(range included: from 1/8" BSP to 1" BSP)



Contact your local Barnwell Service Centre...
...or phone our special Sales Hotline:

0121 420 0770

Sealing Washers



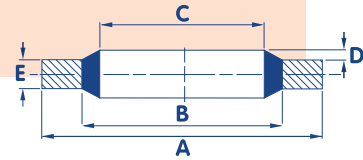
Quality
sealing
solutions

Stockholding and Supply.
Items in this brochure may not necessarily be
manufactured under a registered ISO 9000
management system. © All trademarks acknowledged.

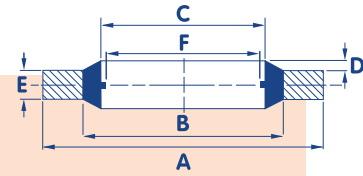
M. Barnwell Services Ltd endeavours to ensure
that the information contained in this publication
pertaining to products and services is correct and
fairly stated. However, we do not accept any liability
for any errors or omissions therein. Reproduction
in whole or in part of this publication without our
written authorisation is prohibited.



Standard Range British Imperial



PLAIN



SELF-CENTRALISING

WHEN ORDERING
SELF-CENTRALISING BONDED WASHERS
ADD SC TO BARNWELL REFERENCE,
EG MBSC45-004

REFERENCE	SIZE (INCHES)		A	B	C	D	E	F	APPROX BURST PRESSURE (BAR)
	BSP	BOLT	+0.13 -0.00	+0.10 -0.10	+0.10 -0.10		+0.15 -0.15	+0.20 -0.20	
MB45-001*	-	6BA	6.35	4.09	3.05			-	2150
MB45-002*	-	4BA	7.26	5.26	4.12			-	1570
MB45-003*	-	2BA	8.38	6.35	5.21	0.20/ 0.45		-	1375
MB45-004	-	1/4	13.21	8.00	6.86		1.22	4.70	2450
MB45-005	-	1/4	13.34	9.53	6.99			4.70	1700
MB45-006	-	5/16	13.34	9.53	8.31			6.10	1700
MB45-007	-	5/16	14.22	10.04	8.64			6.10	1750
MB45-020	1/8	3/8	15.88	11.84	10.37			8.56	1500
MB45-008	-	0.4	18.36	12.45	11.26			8.56	1950
MB45-009	-	7/16	19.05	13.08	11.69			8.80	1900
MB45-021	1/4	1/2	20.57	15.21	13.74		2.03	11.45	1550
MB45-010	-	9/16	22.23	16.39	14.86			11.58	1575
MB45-022	-	0.6	22.23	17.30	15.83			12.10	1310
MB45-011	-	5/8	25.40	18.75	16.51			12.90	1550
MB45-023	3/8	-	23.80	18.75	17.28			14.96	1260
MB45-012	-	11/16	25.40	19.69	18.16			14.50	1320
MB45-024	-	3/4	26.92	21.21	19.69			15.80	1260
MB45-025	1/2	13/16	28.58	23.01	21.54			18.64	1150
MB45-026	5/8	7/8	31.75	24.97	23.49			20.60	1250
MB45-013	-	15/16	33.27	26.04	24.26		2.50	20.20	1275
MB45-027	3/4	1.0	34.93	28.53	27.05			24.13	1060
MB45-028	-	1.1/16	38.61	30.61	27.82			22.90	1250
MB45-014	-	1.1/8	36.58	30.86	29.33	0.25/ 0.51		23.90	900
MB45-029	7/8	1.3/16	38.10	32.29	30.81			27.89	900
MB45-015	-	1.1/4	41.40	35.69	32.64		3.38	27.10	800
MB45-030	1.0	1.5/16	42.80	36.88	33.89			30.30	810
MB45-016	-	1.3/8	44.45	38.99	35.94		3.38	29.50	700
MB45-017	-	1.1/2	47.75	42.04	38.96			32.70	700
MB45-032	1.1/4	1.5/8	52.38	45.93	42.93		2.50	38.96	690
MB45-018	-	1.3/4	57.15	48.39	45.34		3.38	37.90	875
MB45-033	1.1/2	1.7/8	58.60	51.39	48.44		2.50	44.86	690
MB45-019	-	2.0	63.50	54.74	51.69		3.38	43.60	780
MB45-034	1.3/4	2.1/8	69.85	58.30	54.89			50.80	950
MB45-035	-	2.1/4	70.36	61.09	58.04		3.25	-	740
MB45-036*	2.0	-	73.03	63.63	60.58		2.50	56.67	700
MB45-037	-	2.1/2	77.72	67.44	64.39			55.40	750
MB45-038	2.1/4	-	79.50	69.98	66.68		3.38	62.80	670
MB45-039	2.1/2	-	90.17	79.38	76.08			72.20	680
MB45-079	3.0	-	101.47	92.84	89.09			85.00	550

*Washers not available in Self-Centralising.
All dimensions in mm unless otherwise stated.

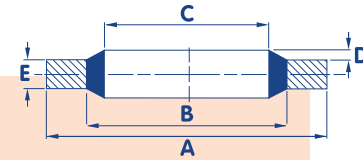
Standard Materials

Bonded washers are available in the following standard materials:

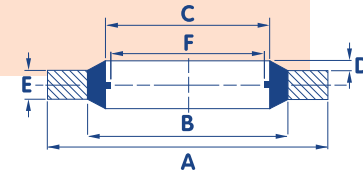
- Nitrile
- HNBR
- Viton™
- EPDM
- Mild Steel
- Zinc Plated
- Clear Passivate
- Gold Passivate
- Stainless Steel
- Aluminium

Information on non-standard materials is available on request.

German Metric Range Metric threads to ISO R261 BS3643



PLAIN



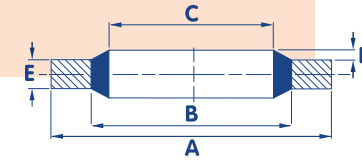
SELF-CENTRALISING

WHEN ORDERING
SELF-CENTRALISING BONDED WASHERS
ADD SC TO BARNWELL REFERENCE,
EG MBSC45-204

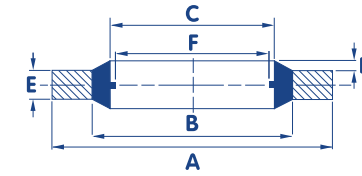
REFERENCE	THREAD SIZE	A	B	C	D	E	F	APPROX BURST PRESSURE (BAR)
		+0.13 -0.00	+0.10 -0.10	+0.10 -0.10		+0.25 -0.00	+0.15 -0.15	
MB45-201*	3.5	7.20	5.20	4.10			-	1600
MB45-202	4	7.00	5.40	4.50			3.40	1250
MB45-203	5	9.00	6.80	5.70			4.50	1400
MB45-204	5	10.00	7.40	5.70		1.00	4.50	1500
MB45-205	5.5	9.20	7.20	6.20			4.70	1220
MB45-206	6	10.00	8.00	6.70			4.70	1130
MB45-207	6	11.00	8.20	6.70			4.70	1510
MB45-208*	6	11.00	8.20	6.70	0.30	2.50	-	1480
MB45-209*	6.5	12.00	8.80	7.10			-	1560
MB45-210	6.7	10.20	8.60	7.30			5.77	1330
MB45-211*	8	13.40	9.40	8.50			-	1780
MB45-212	8	13.00	10.00	8.70		1.00	6.40	1330
MB45-213	8	14.00	10.40	8.70			6.40	1550
MB45-214*	8	16.00	10.40	8.70			-	2150
MB45-215	8.5	13.30	10.50	9.30			6.90	1200
MB45-216	10	15.88	12.00	10.35		2.00	8.56	1450
MB45-217	10	16.00	12.40	10.70			8.05	1350
MB45-218	10	18.00	12.40	10.70			8.05	1880
MB45-219	11	16.30	12.70	11.40			9.80	1250
MB45-220*	11	18.50	13.70	11.80			-	1540
MB45-221	11	19.10	13.50	11.80			9.80	1770
MB45-222	12	18.00	14.30	12.70			9.73	1250
MB45-223	12	20.00	14.40	12.70			9.73	1680
MB45-224*	13	20.00	15.40	13.70			-	1340
MB45-225	13	22.00	15.40	13.70		1.50	10.80	1810
MB45-226	13.5	18.70	15.70	14.00			11.30	900
MB45-227	14	22.00	16.40	14.70			11.38	1510
MB45-228*	15	22.70	17.78	16.00			-	1260
MB45-229	16	24.00	18.40	16.70			13.41	1400
MB45-230	17	24.00	19.20	17.40			13.08	1150
MB45-231	17.5	24.70	20.10	18.00			13.60	1070
MB45-232	18	26.00	20.40	18.70			14.76	1275
MB45-233	20	28.00	22.50	20.70			16.76	1150
MB45-234	21	28.70	23.30	21.50		2.50	17.80	1080
MB45-235*	22	28.00	24.20	22.50	0.40	1.50	-	760
MB45-236	22	30.00	24.40	22.70		2.00	18.74	1100
MB45-237*	22	30.00	24.40	22.70		3.00	-	1080
MB45-238	24	32.00	26.40	24.70			20.11	1050
MB45-239	26	35.00	28.40	26.70			22.30	1050
MB45-240	27	36.00	29.00	27.20			23.30	1130
MB45-241*	28	37.00	30.40	28.70		2.00	-	1000
MB45-242	30	39.00	33.00	31.00			25.70	860
MB45-243	33	42.00	35.80	33.70			28.70	900
MB45-244	33	43.00	36.40	34.30			28.70	880
MB45-245	36	46.00	38.80	36.70			31.10	880
MB45-246	39	51.00	41.90	40.00		2.50	34.10	1020
MB45-247	42	53.00	44.40	42.70			36.50	940
MB45-248	48	59.00	50.80	48.70			41.90	800
MB45-249*	51	60.00	54.10	52.00		3.00	-	540
MB45-250*	52	64.50	56.40	59.09			-	710
MB45-251*	60	73.00	63.00	60.70			-	780
MB45-252*	68	79.50	72.10	68.60		3.50	-	510
MB45-253*	75	90.30	79.10	76.08		3.38	-	700
MB45-254*	88	101.35	92.10	89.09		3.25	-	510
MB45-255*	125	143.67	132.70	127.00		5.00	-	420

*Washers not available in Self-Centralising.

French Metric Range Metric threads to ISO R261 BS3643



PLAIN



WHEN ORDERING
SELF-CENTRALISING BONDED WASHERS
ADD SC TO BARNWELL REFERENCE,
EG MBSC45-304

REFERENCE	THREAD SIZE	A	B	C	D	E	F	APPROX BURST PRESSURE (BAR)
		+0.13 -0.00	+0.10 -0.10	+0.10 -0.10		+0.25 -0.00	+0.10 -0.10	
MB45-301*	3	7.50	5.00	3.60			-	1950
MB45-302	4	9.00	6.00	4.60			3.40	2000
MB45-303	5	10.00	7.00	5.60		1.00	4.50	1780
MB45-304	6	11.00	8.00	6.60			4.70	1680
MB45-305*	6	13.27	8.00	6.85		1.30	-	1970
MB45-306	6	11.40	8.40	7.00	0.30		4.70	1540
MB45-307	8	13.00	10.00	8.60		1.00	6.40	1330
MB45-310	10	17.00	12.10	10.70			8.56	1730
MB45-312	11	18.10	13.20	11.80			9.80	1600
MB45-313	12	19.00	14.10	12.70			9.73	1530
MB45-315	13	20.10	15.20	13.80	0.40	1.50	10.80	1440
MB45-316	14	21.00	16.10	14.70			11.38	1370
MB45-317	16	23.00	18.10	16.70	0.30		13.41	1240
MB45-318	17	23.70	18.80	17.40			13.08	1200
MB45-319*	16.5	23.90	18.70	17.20	0.40	2.10	-	1020
MB45-320	18	27.00	20.40	18.70			14.76	1450
MB45-321	20	29.00	22.40	20.70	0.30		16.76	1340
MB45-323	21	30.00	23.40	21.70			17.80	1290
MB45-324	22	31.00	24.40	22.70			18.74	1240
MB45-325	23	32.00	25.40	23.70			19.30	960
MB45-326	24	33.00	26.40	24.70			20.11	1160
MB45-327	26	35.30	28.70	27.00		2.00	22.30	870
MB45-328	27	36.00	29.40	27.70			23.30	1060
MB45-329	28	36.00	30.30	28.60			24.80	730
MB45-330*	28.5	37.50	30.90	29.20	0.40		-	810
MB45-331	30	39.00	32.40	30.70			25.70	970
MB45-332	33	42.00	35.40	33.70			28.70	900
MB45-333	36	48.00	39.60	37.00			31.10	1010
MB45-334	39	51.00	42.60	40.00			34.10	950
MB45-335	42	54.00	45.60	43.00		2.50 +0.15 -0.15	36.50	890